



# **AFRICAN INSIGHT ACADEMY**

INSPIRE | EDUCATE | EMPOWER



**WILDLIFE CONSERVATION AND  
ECOLOGY WORK EXPERIENCE**

### **Aim**

This programme is aimed specifically at (but not limited to) those looking to pursue a career in conservation and is designed to inspire, educate and empower. Mentored by experienced and passionate facilitators this programme exposes participants to current concepts and principles of wildlife conservation and ecology within a South African context.

You will be able to use this experience on your

resume and it will assist you in making more informed decisions with regard to the next step of your career. You will leave with knowledge and skills gained from practical experience and theoretical study, across a range of conservation management and ecological research techniques.

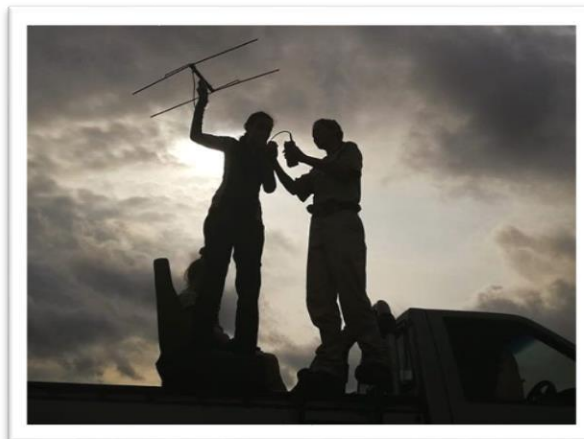
### **Objective**

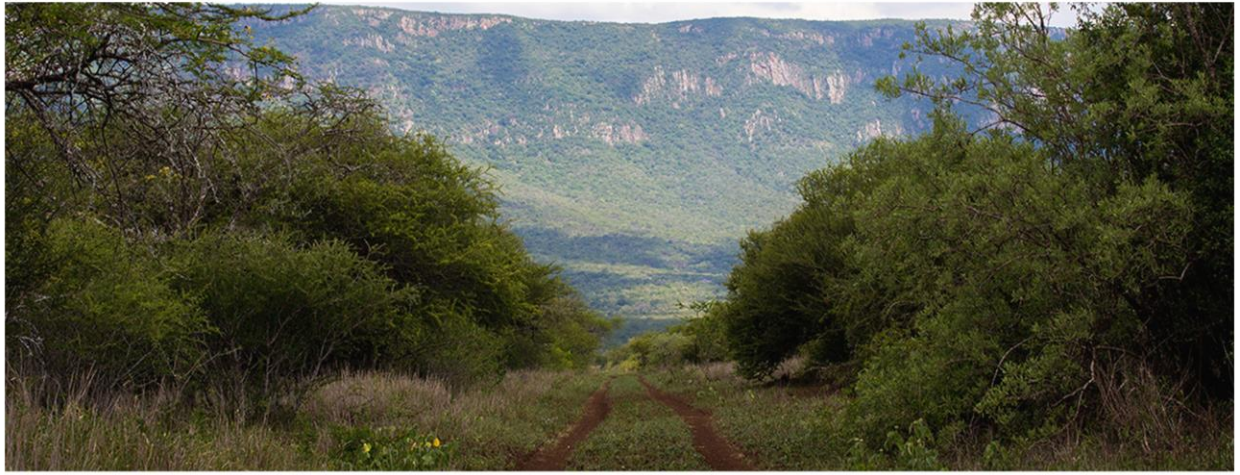
To provide a stimulating programme that incorporates both theoretical and practical application across a broad spectrum of current and relevant concepts and principles in conservation and ecology, that benefits you as well as the host protected area.

Conservation Managers and Ecologists are the backbone of a protected wildlife reserve. They are responsible for the effective day to day running of the reserve. They are perceived as a veritable “jack of all trades” requiring a very wide range of skills and experience including water provision (for people and wildlife), road, vehicle and infrastructure maintenance, fencing, antipoaching / law enforcement as well as biological management. They, therefore, require a sound working knowledge of what ecological and security staff do. An understanding of the Ecologist’s role is essential when it comes to long term planning and understanding the end goal of a conservation strategy.

### **Who should apply?**

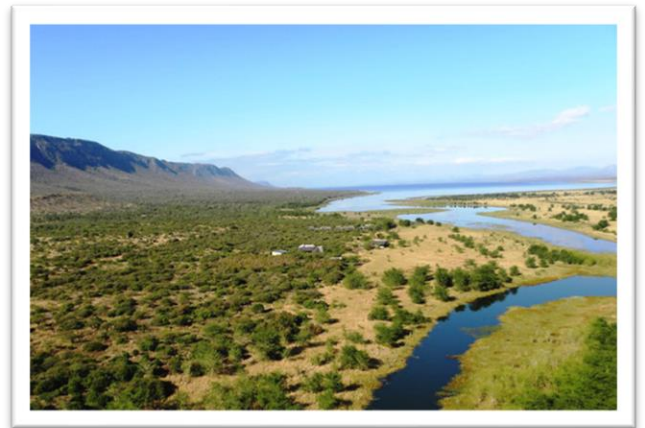
We welcome all applications whether you are considering a career in wildlife conservation, have completed an academic qualification and are looking for practical experience, or are a "citizen scientist" looking for a deeper and more hands-on holiday experience. Enthusiasm, commitment, determination and the ability to think outside of the box are skills which you need!





**Examples of ongoing projects that you may be involved in include:**

- Leopard survey
- Hyena survey
- Elephant monitoring and observation
- Game counts
- Vegetation surveys
- Vulture nest survey
- Alien invasive plant control
- Erosion control
- Fence maintenance
- Maintaining ID lists for bird, reptiles, amphibians and trees



**Other activities you might be involved in are:**

- Small mammal monitoring/research
- Water management for wildlife
- Community cattle dipping
- Fire management
- Tracks & signs

**Working Hours:**

A full 9-hour day is expected from participants which can vary from day to day depending on the day's task and what surprises come up. Participants get 1 shopping day and 1 free day off per week and depending on what might be planned these days can be used to join our optional weekend excursions.

**Optional Weekend Excursions:**

Subject to sufficient from the group there may be an opportunity to participate in a 2- or 3-night excursion off the reserve to other tourist attractions in the region. The cost for this is not included in your fee and will be charged separately should you choose to participate.

**What do we need from you?**

Dedication, commitment, hard work and your humour! You will be regarded as team members and not as tourists and will be expected to also respond as such. Be prepared for an authentic African experience!

### Terms and Conditions:

It is important that you understand the importance of the following:

- To be enthusiastic and independent
- To show respect towards the people and culture of the local community.
- To show flexibility towards responsibilities, tasks and activities.
- This is not a relaxing holiday but an experience where hard work is expected.
- There will be times when things do not go according to plan



### Accommodation:

During your stay you will be living on site in a private camp on the reserve. You will have a furnished tent with solar light. The camp is supplied with running water, communal showers and toilets and a central kitchen, dining and socialising unit. Bedding is provided, and laundry facilities are available.



### Meals:

Groceries are provided and participants will prepare their own meals in a fully equipped bush kitchen. There will be a weekly shopping trip to the nearest town to restock on groceries and personal items.

### Connectivity:

The camp has limited Wi-Fi. There is mobile phone coverage on the reserve, it generally has reliable connectivity. We recommend you buy a local sim card.

### Dates and Flight Information:

Start: 03 June 2024

End: 01 July 2024

The reserve is remote and therefore participants should arrive on a flight landing in Johannesburg no later than 09h00 on the starting date. Departure flight should depart no earlier than 19h00 on the end date.

**COST PER PERSON:**

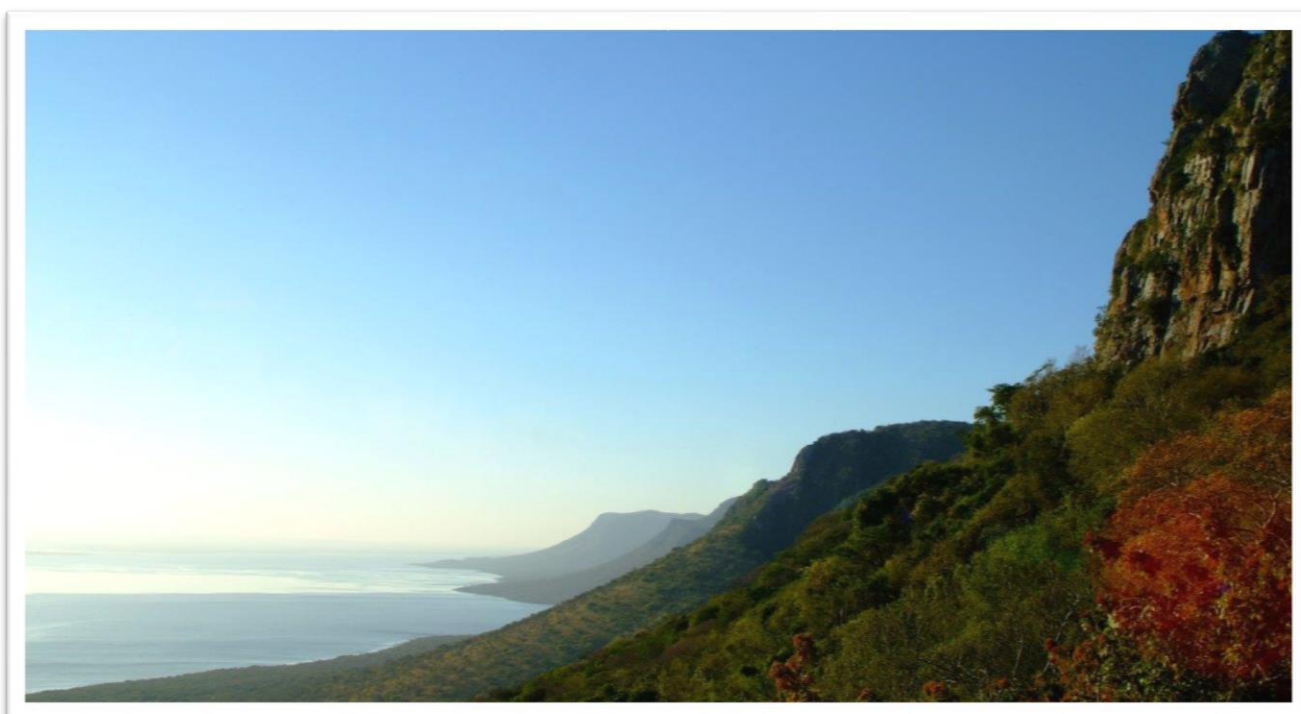
**£2000.00**

**Included in the fees are:**

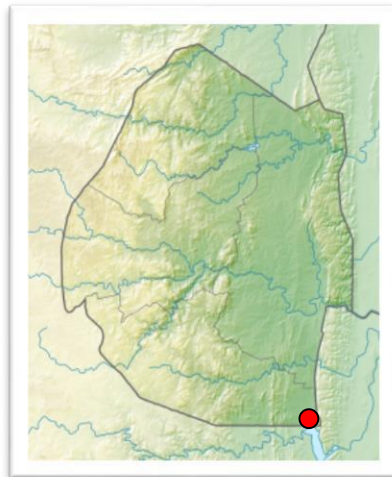
- Pick up upon arrival at Durban International airport (on scheduled dates only)
- Accommodation
- Use of resources and equipment on site for project purposes
- Dedicated mentors to supervise you
- Use of laundry facilities

**Excluded from the fees are:**

- Meals
- Other personal expenses
- Insurance
- Flights
- Monthly weekend excursions



**Enquiries: [info@africaninsight.co.za](mailto:info@africaninsight.co.za)**



Royal Jozini Private Game Reserve is part of the Nsubane-Pongola Transfrontier Conservation and Area (NP-TFCA), an area jointly declared by the governments of South Africa, Swaziland and Mozambique in March 2000 for the conservation of biodiversity, the betterment of local communities, and the implementation of infrastructural and development strategies. NP-TFCA is in turn one of 5 mini TFCA's that constitute the Lubombo Transfrontier Conservation and Area, which is 4,195 km<sup>2</sup> in extent and incorporates Swaziland, Mozambique, and South Africa.

Royal Jozini is 14,000 hectares nestled between the magnificent Lubombo Mountains and spectacular Lake Jozini in the south east of eSwatini (Swaziland), a low-risk Malaria area just 9kms from the South African border. Drive time from Johannesburg is 8-hours.

The vegetation is predominantly mixed acacia bushveld; fever-tree riverine forest, marula forest, open savannah plains, craggy mountain escarpment and the seasonal flood plains on the shore of the lake which offers wonderful game viewing. The diverse topography from the top of the Lebombo mountains to the lake results in a wide variety of habitats and ecosystems that supports an abundance of biodiversity including 450 species of birds and larger wildlife including elephant, buffalo, leopard, rhino, zebra, giraffe, wildebeest, waterbuck, bushbuck, kudu, jackal, hyena, crocodile and hippo.

